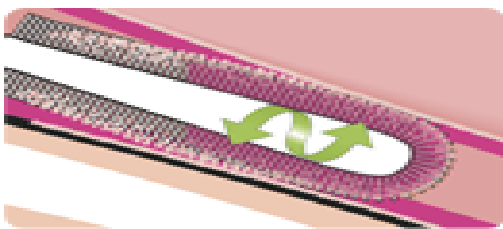
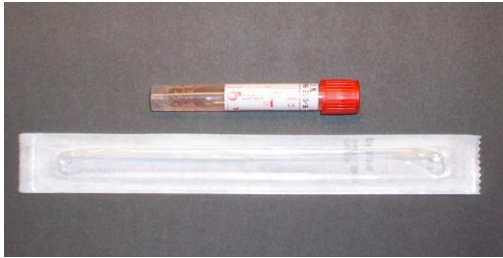


## Policy 40-70, Appendix A

### NASOPHARYNGEAL SWAB FOR INFLUENZA TESTING



#### Equipment:

- **Viral transport media with flocked swab kit - SKU #204783** obtain from Materials Management. Store at room temperature.
- **Virology requisition and labels**
- **Plastic bag**
- **Appropriate Personal Protective Equipment (gloves, mask and eye protection)**

#### Step 1:

- Patient should be seated or lying in a comfortable position. Inform patient they may feel some discomfort.
- Don personal protective equipment.
- Tilt head back and lift nose slightly.
- Insert small flocked swab into nostril gently, push straight back along the nasal septum just above the floor of the nasal passage to the nasopharynx until gentle resistance is felt and the tip is touching the mucosal surface as indicated in diagram.

To view video on proper collection go to <http://vimeo.com/7748002>

#### Step 2:

- Rotate the swab two to three times and hold the swab in place for 5 seconds to ensure maximum absorbency.

#### Step 3:

- Put the swab in the Viral Transport Medium tube and break the shaft at the breakpoint so the tip drops into the transport medium tube. Secure the top of the tube.
- Label specimen and place in plastic bag.
- Write on requisition: Nasopharyngeal swab for respiratory viruses and fully complete requisition.
- Transport to Virology without delay. Refrigerate if sample cannot be immediately transported.